

Bituthene® 6000

Heavy duty, preformed composite membrane combining a self-adhesive rubber/bitumen compound and a tough, puncture-resistant 4 ply polyethylene waterproof laminate for waterproofing critical sub-structures and civil works

Product Description

Bituthene® 6000 is ideal for waterproofing structural concrete and civil works such as airports, rapid transit systems, power plants, environmental projects and earth sheltered structures and may be used in lieu of Bituthene 3000 on basements and substructures that require extra tough waterproofing protection.

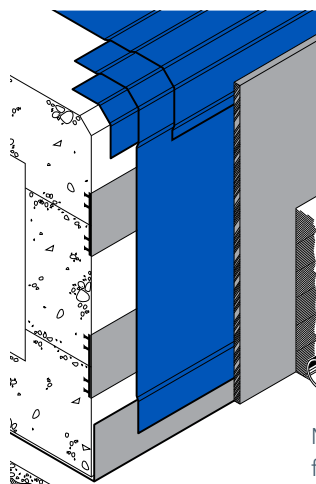
Features

- Waterproof — capable of resisting a hydrostatic head when fully supported.
- Cross laminated — provides dimensional stability, high tear strength, puncture and impact resistance.
- Single layer — simple, reliable, low labour cost with benefit of site programmed installation.
- Cold applied — no heating, self-adhesive overlaps ensure continuity.
- Chemically resistant — provides effective external protection against aggressive soils and ground water.
- Flexible — accommodates minor settlement and shrinkage movement.
- Controlled thickness — factory-made sheet ensures constant, non-variable site application.
- Tanking security — combined flexible membrane and waterstop system for security.

Applications

Bituthene 6000 is a heavy duty, advanced, cold applied, flexible preformed waterproof membrane combining a special high performance 4 ply cross-laminated, HDPE carrier film with a self-adhesive rubber bitumen compound. The heavy duty advanced carrier film is manufactured by cross laminating and chemically bonding the layers together, to produce a film with greatly improved physical characteristics compared with traditional low density polyethylene films. Tear strength, puncture resistance and impact resistance are all increased to give a better factor of safety against accidental damage. When used in conjunction with Preprufe® membranes in reverse tanking applications and waterstops, cast into the concrete shell, it will provide a continuous waterproofing/tanking system for sub-structures and civil works.

It is supplied to sites in rolls 1.6mm thick, 1m wide and 20m long (20 sq metres) and is unrolled sticky side down on to primed



NOTE: See Preprufe® data sheet for waterproofing under slabs and vertical reverse tanking applications

concrete slabs or vertical concrete faces. Continuity is achieved by overlapping 50mm and firmly rolling the joint. A guideline is printed on the membrane.

Applied to walls and to underground roof slabs, Bituthene 6000 will provide a continuous heavy duty moisture-waterproof barrier.

Being factory made, thickness of membrane is constant throughout and is not subjected to variations by site labour such as occur with brush applied materials. Bituthene 6000 is extremely flexible and well capable of bridging shrinkage cracks in the concrete and will accommodate minor differential movement throughout the service life of the structure.

Bituthene membranes should never be taken through load bearing brick/blockwork walls and must be linked with the damp-proof course to prevent extrusion under load.

Installation

Sloping or vertical faces shall be smooth, regular, dry and free from nails and primed with one coat of Primer WP-3000 applied by

brush or roller, at a rate of 12 ~ 15 sq metre / litre depending on the porosity of the surface, and allowed to dry completely before the application of the Bituthene. Brickwork shall be flush pointed or rendered to provide a smooth surface before priming.

Where Bituthene is to be left temporarily exposed on vertical surfaces, batten fixing may be necessary to prevent slippage. Prior to backfilling remove battening and cover fully with a subsequent layer of Bituthene.

Bituthene 6000 shall be laid by peeling back the protective release paper and applying the adhesive face onto the prepared surface. The material should be brushed onto the surface to ensure good initial bond and exclude air. Adjacent rolls are aligned and overlapped 50mm minimum at side and ends and well rolled with a firm pressure using a Bituthene Lap Roller to ensure complete adhesion and continuity between the layers. Damaged areas to be repaired by patching with an oversized patch applied to a clean dry surface and firmly rolled.

Following the application, care should be taken to prevent damage by following trades by using Servipak boards spot bonded with Pak Adhesive or a 25mm screed as horizontal protection. Vertical faces to be protected against damage from backfilling and reinforcement by using Servipak or Korkpak spot bonded with Pak adhesive.

Backfill material should be compacted in layers to prevent settlement and dragging forces being transferred to the waterproofing systems.

Supply

Bituthene 6000

Storage

Primer WP-3000

Coverage

Bituthene LM

Bituthene Mastic

Bituthene Lap Roller

1m x 20m roll (20 sq m)
Average net weight 40kg
Store upright in dry
conditions below 35 °C

18.9 litre pails
12 ~ 15 sq metre per litre
depending on method of
application, surface texture,
porosity and ambient
temperature

5.7 litre pails

850cc cartridges / 3 litre
pails

Unit

Complementary Materials

Servipak, Servipak SA
protection boards
Pak Adhesive

See separate data sheet
for details

See separate data sheet
for details

Serviseal, PVC Edgetie,
and Servitite waterstops
Preprufe 160R and 300R

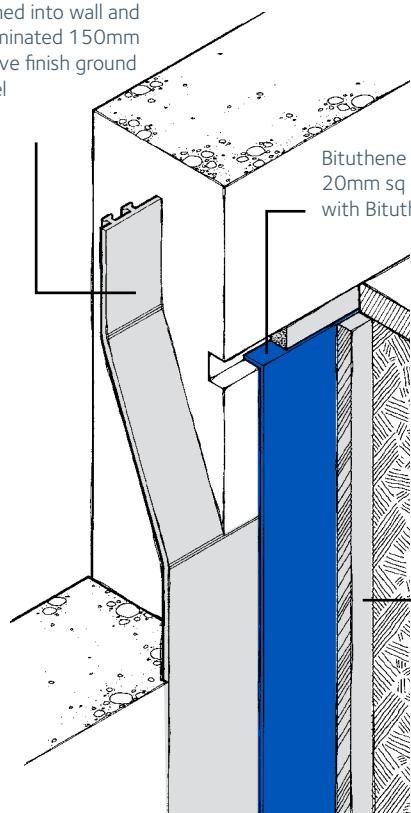
See separate data sheet
for details

See separate data sheet
for details

Equipment by Others

Soft broom, Stanley knife, brush or roller for priming.

Serviseal waterstops
turned into wall and
terminated 150mm
above finish ground
level



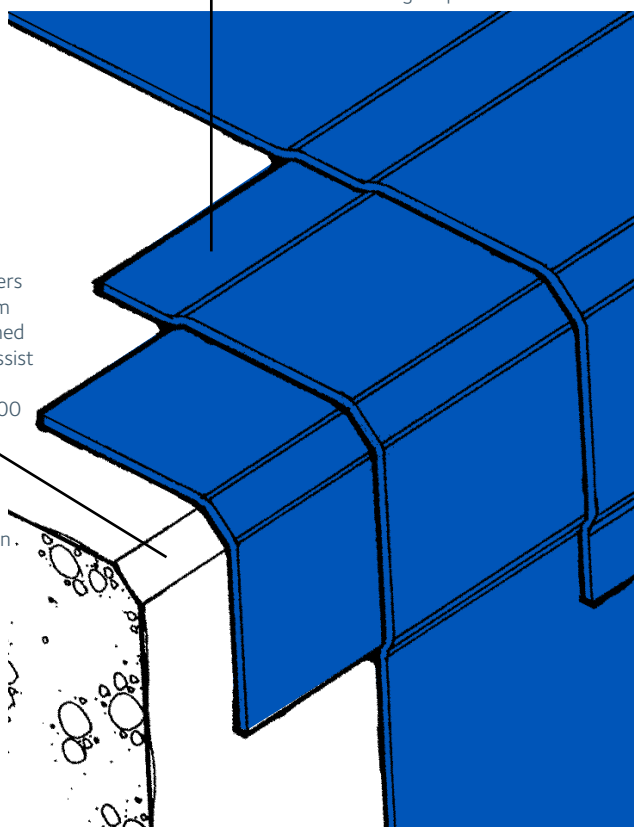
Termination of membrane at
top of wall

Bituthene 6000 turned into
20mm sq chase and pointed
with Bituthene Mastic

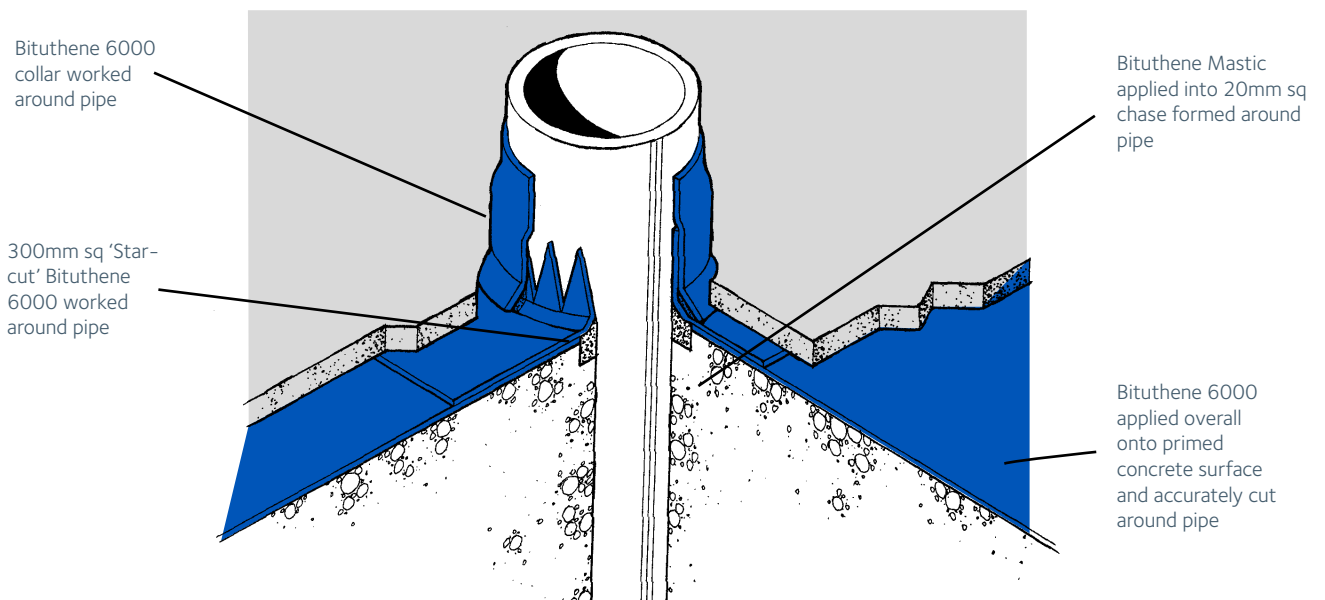
External corners
to have 25mm
Chamfer formed
concrete to assist
in dressing of
Bituthene 6000

Servipak protection,
as required, spot
bonded into
position using Pak
Adhesive

300mm wide
Bituthene 6000
reinforcing strip



Junction between wall and
underground roof slabs



Pipe through Slabs

A similar detail to this can also be used for pipes through walls

Performance

Bituthene 6000 Typical Performance Properties

Property	Typical Values	Test Method
Colour	Dark Grey / Black	N/A
Tensile Strength (Film Only)	7N / mm	ASTM D412*
Tape Strength	10N / mm	ASTM D412
Elongation of Membrane (To Ultimate Failure of Rubberised Asphalt)	150%	ASTM D412*
Lap Adhesion @ 23°C	683N / mm	ASTM D1876
Cycling Over Crack @ -32°C	no effect 100 cycles	ASTM C836
Puncture Resistance	400 N	ASTM E154*
Resistance to Hydrostatic Head	60m	ASTM D5385
Tear Resistance	36N / mm	ASTM D624
Permeance	1.3ng / m ³ .s.Pa	ASTM E96 [12]

* Typical values may represent average values from samples tested. Test methods may be modified.

Quality Assurance

GCP Applied Technologies is certified to ISO 9001 : 2008 by TUV SUD PSB Pte Ltd.

Health and Safety

Refer to relevant Material Health and Safety data sheets.

Specification

Bituthene 6000 preformed membrane shall be applied onto smooth primed concrete by applying the preformed membrane, sticky side downwards to give well rolled 50mm overlaps, laid strictly in accordance with manufacturer's instructions and supplied by GCP Applied Technologies. For further information, contact your local GCP representative.

Flat Deck Waterproofing

Bituthene 6000 is suitable for use as a primary waterproofing membrane on a protected roof structure. Refer to Flat Deck Protection section.

Technical Services

For assistance with working drawings for projects and additional technical advice, please contact GCP Applied Technologies.

gcpat.com | For technical information: asia.enq@gcpat.com

Australia 1800 855 525 New Zealand +64 9 448 1146 China Mainland +86 21 3158 2888 Hong Kong +852 2675 7898
India +91 124 402 8972 Indonesia +62 21 893 4260 Japan +81 3 5226 0231 Korea +82 32 820 0800 Malaysia +60 3 9074 6133
Philippines +63 49 549 7373 Singapore +65 6265 3033 Thailand +66 2 709 4470 Vietnam +84 8 3710 6168

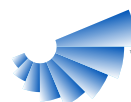
We hope the information here will be helpful. It is based on data and knowledge considered to be true and accurate, and is offered for consideration, investigation and verification by the user, but we do not warrant the results to be obtained. Please read all statements, recommendations, and suggestions in conjunction with our conditions of sale, which apply to all goods supplied by us. No statement, recommendation, or suggestion is intended for any use that would infringe any patent, copyright, or other third party right.

Bituthene and Preprufe are trademarks, which may be registered in the United States and/or other countries, of GCP Applied Technologies, Inc. This trademark list has been compiled using available published information as of the publication date and may not accurately reflect current trademark ownership or status.

© Copyright 2016 GCP Applied Technologies, Inc. All rights reserved.

GCP Applied Technologies Inc., 62 Whittemore Avenue, Cambridge, MA 02140, USA

Printed in Singapore | 03/16 | 300-Bituthene-14



gcp applied technologies

GRACE CONSTRUCTION & PACKAGING