

BITUTHENE[®] 2000

Pre-formed, self-adhesive rubber bitumen/high density polyethylene damp proof membrane

Product Description

BITUTHENE[®]2000 is a combination of a high density polyethylene film and a self-adhesive rubber/ bitumen compound.

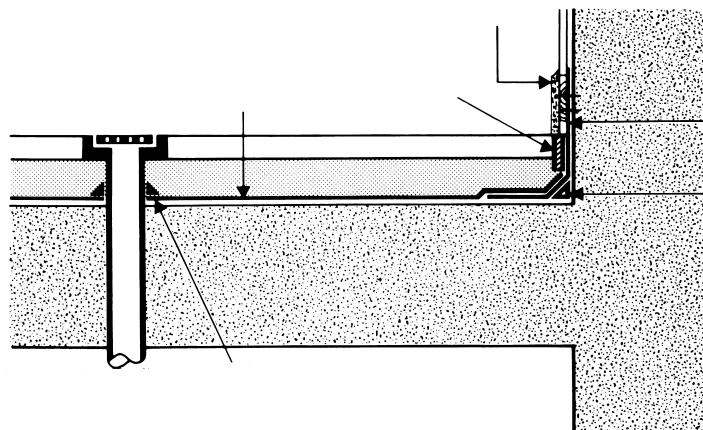
Features

- Damp proof - moisture/vapour proof barrier capable of resisting hydrostatic head conditions up to 5 metres.
- Flexible - accommodates minor settlement and shrinkage movement.
- Cold applied - no heating, simple, low labour cost.
- Self-adhesive - full continuity at overlaps.
- Factory controlled thickness - no variation by site labour.
- Rubber/bitumen - flexibility and resistance to most dilute acids and alkalis.
- Preformed film surface - immediate access for same day screeding.

Applications

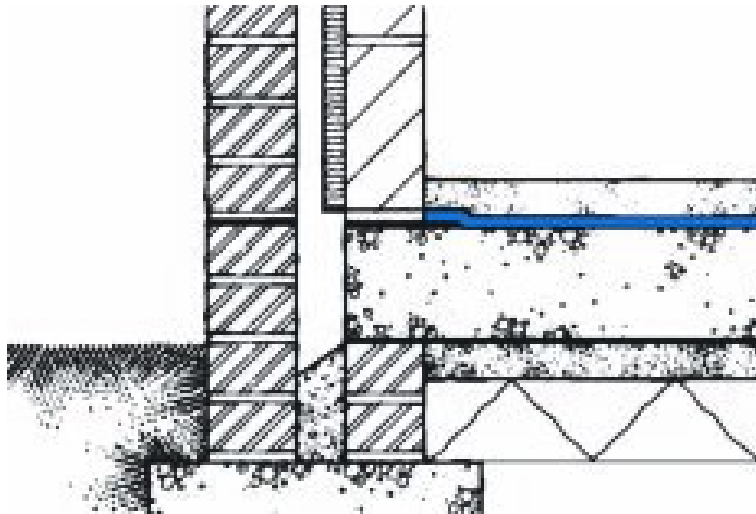
It is supplied in rolls 1mm thick overall, 1m wide and 30m long (30 sq metres) and is unrolled sticky side down on to blinded hardcore or structural concrete slabs. Waterproof joints are made by overlapping 50mm and firmly rolling surfaces. Applied to top of concrete slab or blinded hardcore, Bituthene 2000 will provide a moisture/vapour proof barrier and radon gas barrier.

Being factory made, thickness of membrane is constant throughout and is not subjected to variations by site labour such as occurs with brush applied materials. Bituthene 2000 is flexible and well capable of bridging shrinkage cracks in the concrete.



Performance

PROPERTY	TYPICAL VALUES	TEST METHOD
Colour	Dark grey / Black	N/A
Tensile strength (Film Only)	40,000kN/m ²	ASTM D882
Tape strength	5.10N / mm	ASTM D412
Elongation of membrane (To ultimate failure of rubberised asphalt)	150%	ASTM D412
Lap adhesion @ 23 °C	648N / m	ASTM D1876
Puncture resistance	>220N	ASTM E154
Resistance to hydrostatic head	60m	ASTM D5385
Tear resistance	32N / mm	ASTM D624



Installation

Concrete slab or concrete blinded hardcore shall be surface dry, free from standing water, and laid to a regular surface free from sharp protrusions and hollows. Vertical faces shall be smooth, regular, dry and free from nails and primed with one coat of Bituthene Primer applied by brush or roller, at a rate depending on the porosity of the surface and allowed to dry before the application of the Bituthene 2000. Brickwork must be flush pointed or rendered to provide a smooth surface. Bituthene 2000 shall be laid by peeling back the protective release paper and applying the adhesive face on to the prepared surface. The material should be brushed on to the surface to exclude air. Adjacent rolls are aligned and overlapped 50mm minimum at side and ends and well rolled with a firm pressure using a Bituthene Lap Roller to ensure completed adhesion and continuity between the layers. A guideline is printed on the membrane. Following the application care should be taken to prevent damage by following trades. Damaged areas can be repaired by patching with an oversized patch applied to a clean, dry surface and firmly rolled.

Health and Safety

Refer to relevant Material Health and Safety data sheets.

Quality Assurance

GCP Applied Technologies is certified to ISO 9002 by TUV SUD PSB Pte Ltd.

Specification

Bituthene 2000 preformed membrane shall be laid on to smooth concrete surface, or concrete blinded hardcore by applying the preformed membrane, sticky side downwards to give well rolled 50mm overlaps, laid strictly in accordance with the manufacturer's instructions and supplied by GCP Applied Technologies. For further information, contact your local GCP representative.

Technical Services

For assistance with working drawings for projects and additional technical advice, please contact GCP Applied Technologies.

gcpat.id | For technical information: asia.enq@gcpat.com

Australia 1800 855 525 New Zealand +64 9 448 1146 China Mainland +86 21 3158 2888 Hong Kong +852 2675 7898 India +91 124 488 5900 Indonesia +62 21 893 4260 Japan +81 3 5226 0231 Korea +82 32 820 0800 Malaysia +60 3 9074 6133 Philippines +63 49 549 7373 Singapore +65 6265 3033 Thailand +66 2 709 4470 Vietnam +84 8 3710 6168

We hope the information here will be helpful. It is based on data and knowledge considered to be true and accurate, and is offered for consideration, investigation and verification by the user, but we do not warrant the results to be obtained. Please read all statements, recommendations, and suggestions in conjunction with our conditions of sale, which apply to all goods supplied by us. No statement, recommendation, or suggestion is intended for any use that would infringe any patent, copyright, or other third party right.

Bituthene is a trademark, which may be registered in the United States and/or other countries, of GCP Applied Technologies, Inc. This trademark list has been compiled using available published information as of the publication date and may not accurately reflect current trademark ownership or status.

© Copyright 2017 GCP Applied Technologies, Inc. All rights reserved.

GCP Applied Technologies Inc., 2325 Lakeview Parkway, Alpharetta, GA 30009, USA

PT GCP Applied Technologies Indonesia, Cikarang Industrial Estate Kav C-32, Cikarang, Bekasi 17530

This document is only current as of the last updated date stated below and is valid only for use in Indonesia. It is important that you always refer to the currently available information at the URL below to provide the most current product information at the time of use. Additional literature such as Contractor Manuals, Technical Bulletins, Detail Drawings and detailing recommendations and other relevant documents are also available on www.gcpat.id. Information found on other websites must not be relied upon, as they may not be up-to-date or applicable to the conditions in your location and we do not accept any responsibility for their content. If there are any conflicts or if you need more information, please contact GCP Customer Service.

Last Updated: 2022-11-24

gcpat.id/solutions/products/bituthene-post-applied-waterproofing/bituthene-2000